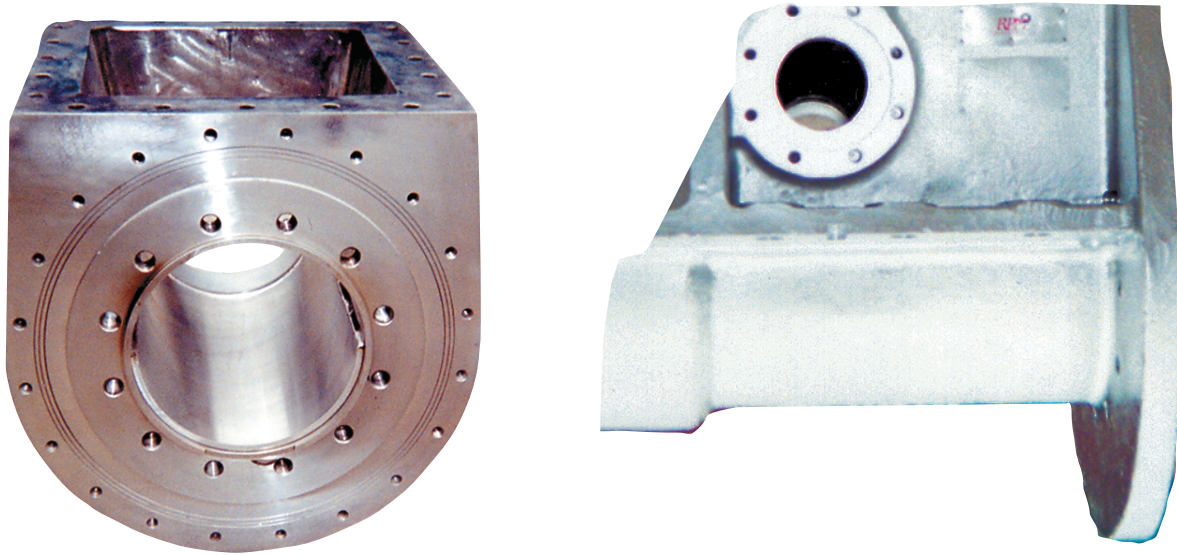


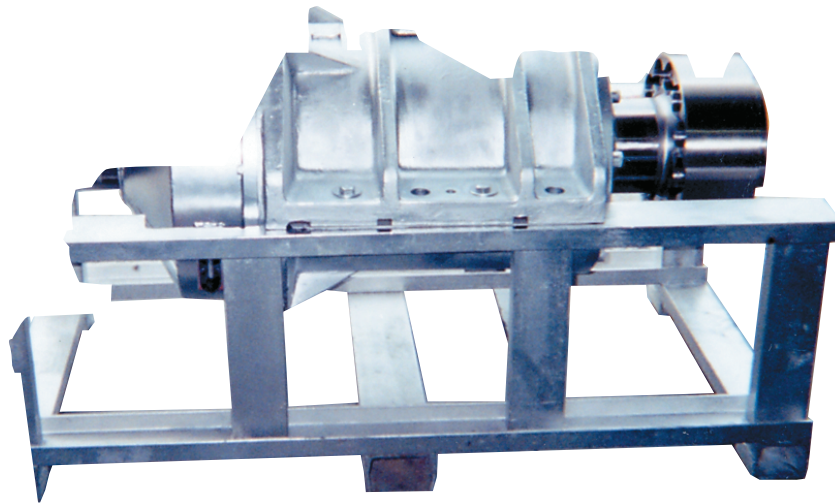
13¹/₂" / 15" INLET HOUSING



- New, Rebuild and Exchange Program Available
- Replaceable wear liners for use with a 13 1/2" Plug Screw
- Modification to allow for use of 15" Plug Screw
- All material used in rebuilds are 316 stainless steel
- Final machining to original design specifications



13¹/₂" / 15" THRUST BEARING ASSEMBLY



- New, Rebuild and Exchange Program Available
- New SKF Bearings
- Shaft rebuilt utilizing 316 stainless steel on all wear surfaces
- New shafts made in 4140 steel
- Wide hub or narrow hub available
- Complete test run analysis performed on all units

Main Office: P.O. Box 471335 • Charlotte, NC 28247 • Phone: 704.602.3070 • Fax: 704.602.3071
Shipping Address: 240 Seaboard Avenue • Johnsonville, SC 29555