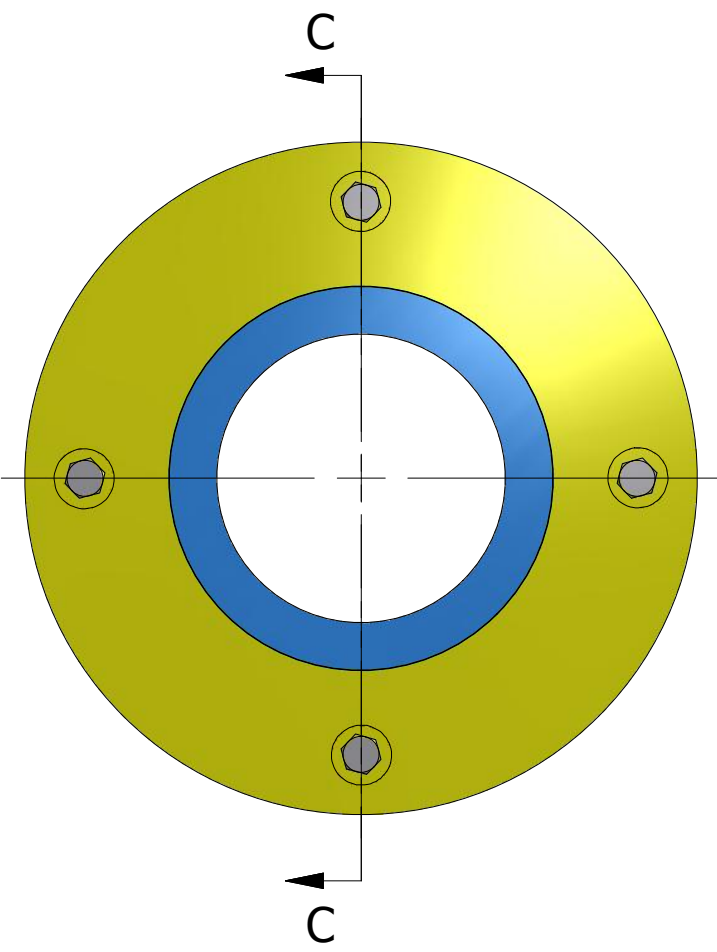
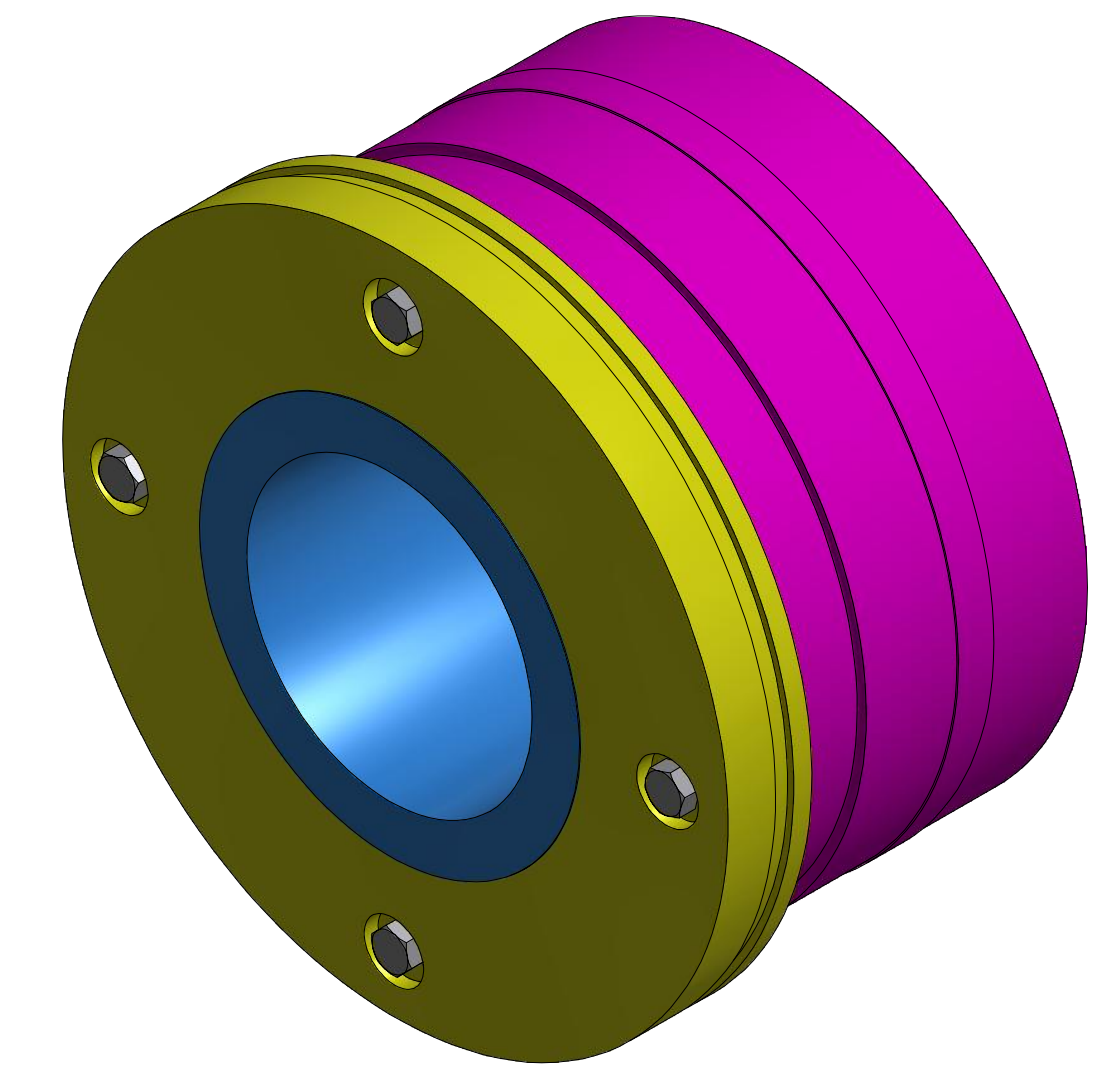
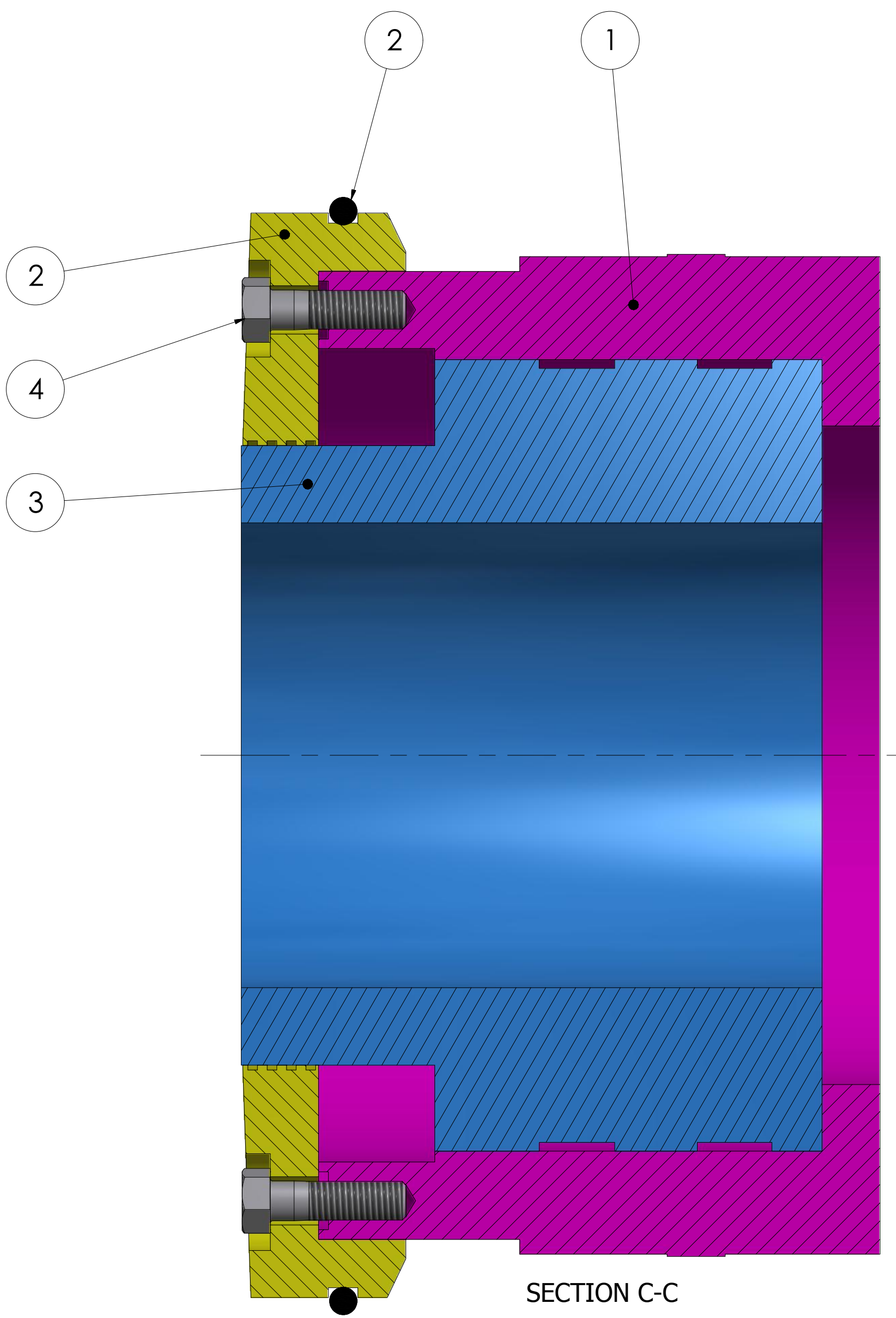


PARTS LIST			
ITEM	QTY	PART NUMBER	DESCRIPTION
1	1	SWR-1010-42.001	SWR-MECHANICAL SEAL-1
2	1	SWR-1010-42.002	SWR-MECHANICAL SEAL
3	1	SWR-1010-42.003	SWR-MECHANICAL SEAL-2
4	4	SWR-1010-42.004	Hex Bolt 1/2-13 UNC - 1.75" LG.
5	1	SWR-1010-42.005	SEAL KIT



REFERENCE:
42-1CP REFINER

STATUS: CERTIFIED	The information contained herein is confidential and proprietary information belonging exclusively to Refiner Products Manufacturing, Inc. and shall not be used or reproduced in any manner, or disclosed to others without the written permission of Refiner Products Manufacturing, Inc.	DRAWN	1/13/2014
		CHECKED	
MATERIAL:	MACHINING TOLERANCES UNLESS OTHERWISE NOTED	QA	
CUSTOMER:		MFG	
	125 STANDARD MACHINE FINISH REMOVE ALL BURRS BREAK OUTSIDE EDGES	APPROVED	
		FRACTIONAL = ± 1/64" DECIMAL = ± .005" ANGLE = ± 1/2°	
		P.O. BOX 471335 - CHARLOTTE, N.C. 28226 - USA - (704) 602-3070	
		TITLE 42-1CP MECHANICAL SEAL	
	SIZE D	DWG NO SWR-1010-42	REV 0
	SCALE	SHEET 1 OF 1	